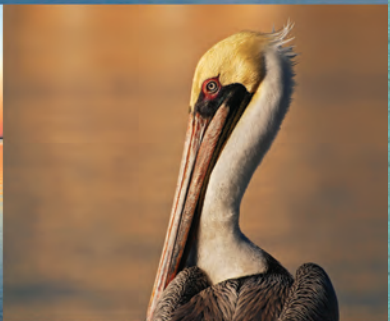




*A Guide to Indian River
Brevard & Volusia
Counties*

FLORIDA



www.IndianRiverLagoonByway.com



Welcome

The Indian River Lagoon National Scenic Byway promotes an environment where travelers are surrounded by a unique and diverse habitat. With breathtaking scenery that inspires a sense of calmness, the many special places along the Byway create unforgettable memories.

Spanning thousands of years, the history of the Indian River Lagoon embodies people's respect for the inherent beauty of this area. The Byway offers travelers an opportunity to witness pristine, fragile ecosystems along with glimpses of both Florida's past and its vision for the future through space exploration.

The Indian River Lagoon National Scenic Byway is 233 miles of roadway that connects delicate expanses of three national wildlife refuges and a national seashore, as well as numerous state and local parks and sanctuaries. The Indian River Lagoon, designated as an Estuary of National Significance, is home to more than 4,000 species of plants and animals, the largest number of any estuary in North America.

While this scenic byway affords travelers a glimpse of a delicately balanced ecosystem, it also personifies the region's history and man's desire for exploration. This area was inhabited by native Ais Indians and visited by Spanish explorers and English pirates. As development advanced the strength of this country, Henry Flagler's railroad afforded early homesteaders the opportunity to continue the exploration of the land's intrinsic resources.

Visitors can enjoy the rich and lavish land either by the roadside or by traveling "off the beaten path" through sailing, swimming, surfing, boating, fishing, birdwatching, hiking and biking.



North Loop Extension

NL1 Mims

In 1876 the Mims brothers and their families moved from Georgia to what is now Mims. Caster Mims had been a railroad agent in Georgia and he and his brothers established orange groves in the area. When the post office was established in 1886, the name Mims was selected.

Lat 28.6654, Long -80.8451
US 1 just north of Titusville between I-95 and the Indian River

NL2 Harry T. & Harriette V. Moore Memorial Park & Cultural Center

Harry T. and his wife Harriette V. were the first true civil rights activists of the modern civil rights era in the State of Florida. Originally the home site of these two slain civil rights activists, the park is dedicated to the celebration of their lives, promoting awareness of their contributions to the early civil rights movement, and preserving African American history.

Lat 28.6558, Long -80.8457
2180 Freedom Avenue, Titusville, FL 32796
321-264-6595
www.brevardcounty.us/ParksRecreation/North/MooreMemorial

NL3 Haulover Canal

Native Americans, explorers and settlers hauled or carried canoes and small boats over this narrow strip of land between Mosquito Lagoon and the Indian River. Eventually it became known as the "haulover." Connecting both bodies of water had long challenged early settlers of this area. The Intracoastal Waterway incorporated the Haulover Canal as a federal project in 1927 to be maintained by the U.S. Army Corps of Engineers.

Lat 28.6217, Long -80.7968
SR 402, Titusville, FL 32781
321-861-0669
www.fws.gov/merrittisland

NL4 Playalinda Beach

Considered a surfing location by many of the locals, this beach is located east of Titusville, Florida within the Canaveral National Seashore.

Lat 28.6570, Long -80.6326
Playalinda Beach Road
www.fws.gov/merrittisland



NL5 Scottsmoor

Scottsmoor is located near the Brevard/Volusia county line and is home to more than 1,600 residents. Remnants of the region's citrus industry surround the community. Scottsmoor is home to Parrish Park and the Scottsmoor Landing Boat Ramp.

Lat 28.7682, Long -80.8785

NL6 Chain of Lakes Park

Located near Eastern Florida State College and the Indian River, this 92.14 acre regional park features wetlands and lakes with walking bridges connected to 3-miles of paved walking trails. Facilities include an observation tower, pavilions, 2 multi-use fields, 2 lighted soccer fields and concession, 3 lighted youth softball fields and concession, 4 lighted adult softball fields and concession, restrooms and parking. **Watchable Wildlife:** Osprey, Gulls, Terns, Waders, Waterfowl

2300 Truman Scarborough Way
Titusville, Florida 32796
(321) 264-5105



North Loop

N1 Canaveral National Seashore

Situated on a barrier island along Florida's east coast, inviting park highlights include pristine, undeveloped beach, dunes and lagoon offering sanctuary to an abundant blend of plants and animals. There are many year-round recreational opportunities also.

Lat 28.6133, Long -80.8077
321-267-1110
212 South Washington Avenue, Titusville, FL 32796
Apollo Visitor Information: 386-428-3384 ext. 0
www.nps.gov/cana

N2 Merritt Island National Wildlife Refuge Visitor Center

This national wildlife refuge was established in 1963 and consists of more than 140,000 acres around the John F. Kennedy Space Center. The refuge has many varieties of habitats, including coastal dunes, saltwater estuaries and marshes, freshwater impoundments, scrub, pine flatwoods and hardwood hammocks, that are home to more than 1,500 species of plants and animals. Visitors can also enjoy recreational opportunities like birdwatching, fishing, hunting, boating and paddling.

Lat 28.6217, Long -80.7968
SR 402, Titusville, FL 32781
321-861-0669
www.fws.gov/merrittisland

N3

U.S. Space Walk of Fame Park & Museum

This "riverwalk" runs along the water and connects four major parks in the area. Along the route, visitors can learn about space facts and monuments, complete with interpretive information.

Lat 28.6126, Long -80.8058
4 Main Street
Titusville, FL 32796
321-264-0434
www.spacewalkoffame.com



N4

Pritchard House in Historic Downtown Titusville

The Pritchard House is an outstanding example of Queen Anne architecture – a distinctly American form that was popular from approximately 1876 to 1910. The house appears today much like it did when it was built in 1891.

Lat 28.6102, Long -80.8078
424 Washington Street, Titusville, FL 32796
321-267-4480
www.nbbd.com/godo/PritchardHouse/index.html

N5

The American Police Hall of Fame and Museum

This hall of fame and museum was built in 1960 and is noted as the United States' first national police museum and memorial dedicated to law enforcement officers killed in the line of duty. It also houses an indoor public gun range and offers many classes and courses about weapon safety.

Lat 28.521875, Long -80.7857
6350 Horizon Drive
Titusville, FL 32780
321-264-0911
www.aphf.org/museum.html



N6

U.S. Astronaut Hall of Fame

This facility is located on the Kennedy Space Center Complex and celebrates the numerous storied accomplishments of astronauts. Many actual spacecrafts and items that have been used by astronauts over the years are housed here.

Lat 28.5261, Long -80.6813
SR 405 Kennedy Space Center, FL 32899
321-449-4400
www.kennedyspacecenter.com/astronaut-hall-of-fame.aspx



N7

The Enchanted Forest Sanctuary Management and Education Center

The EFS includes interpretive exhibits, a Discovery Room, gift shop, library and restrooms. Also featured are an outdoor amphitheater, award-winning butterfly garden and the Enchanted Crossing (an interpretive nature trail).

Lat 28.5281, Long -80.8002
444 Columbia Boulevard, Titusville, FL 32780
321-264-5185
www.efs.eelbrevard.com

N8

Valiant Air Command Warbird Museum

This museum has many exhibits, displays, artifacts and vintage warbirds dating from World War I to present day. It houses an eclectic collection of aircraft and also includes information about some of the pilots who flew the planes.

Lat 28.5197, Long -80.7938
6600 Tico Road, Titusville, FL 32780
321-268-1941
www.vacwarbirds.org

N9

Manatee Hammock Campground

This campground consists of more than 26 acres of hammock vegetation. Pine trees, palm trees and other various types of foliage provide shaded areas throughout much of the area, which is also home to a variety of animals.

Lat 28.6126, Long -80.8058
7275 South U.S. Highway 1,
Titusville, FL 32780
321-264-5083
www.campingspacecoast.com

N10

Cocoa Village

Located amid tree-lined streets, this historic village area offers unique shops and boutiques, eateries and art galleries.

Lat 28.3210, Long -80.6125
Downtown Cocoa between
U.S. Highway 1 and the Indian River Cocoa Beach, FL 32922
321-631-9075
www.visitcocoavillage.com



N11

Riverwalk - A Family Park

Nestled along the Indian River, this 6.37-acre community river park features a nature center and a nature boardwalk that winds through a natural Florida hammock to the river.

Lat 28.2680, Long -80.6886
5355 U.S. Highway 1, Rockledge, FL 32955
321-433-4490
www.brevardparks.com

N12 *Brevard Zoo*

Brevard Zoo offers fun activities for all ages such as kayaking, feeding the animals, Treetop Trek aerial adventures and riding the train. In addition, the Zoo provides daily animal demos that include alligator, otter and vulture feedings.

Lat 28.2250, Long -80.7140
8225 North Wickham Road, Melbourne, FL 32940
321-254-9453
www.brevardzoo.org

N13 *Lori Wilson Park*

A regional beach park that consists of more than 32 acres of maritime hammock, Lori Wilson Park is a popular site for beachgoers, as well as events and group gatherings. The sand dunes and hammock vegetation provide travelers a real taste of Florida's natural coastline.

Lat 28.3371, Long -80.6103
1500 North Atlantic Avenue, Cocoa Beach, FL 32931
321-455-1380
www.brevardparks.com

N14 *Ramp Rock Park*

This three-acre neighborhood park provides two boat ramps, picnic facilities, a fishing dock, and a lighted tennis court. Florida Sportsman magazine has ranked the park as one of the state's best fishing spots. The fishing dock and picnic facilities overlook the beautiful Thousand Islands, which are owned by the city of Cocoa Beach.

Lat 28.3093, Long -80.6136
528 Ramp Road
Cocoa Beach, FL 32931

N15 *Ron Jon Surf Shop*

This internationally known brand's flagship store, located on Cocoa Beach, is open 24 hours a day, 365 days a year. The entire complex sits on more than 2 acres and has a water world, surfwear, sportswear and beach gear for travelers and locals alike. The beach next to the facility hosts surfing events throughout the year. The Florida Surf Museum is located next to the shop.

Lat 28.3567, Long -80.6081
4151 North Atlantic Avenue
Cocoa Beach, FL 32931
321-799-8888
www.ronjonsurfshop.com



N16 *Cocoa Beach Pier*

This historical landmark on Florida's Space Coast was built in 1962 and extends more than 800 feet into the Atlantic Ocean. The pier houses five restaurants, four bars and numerous gift shops. It often features free live music and offers several places to catch a fish or two. Annual events are held, including beach concerts and surf festivals.

Lat 28.3679, -80.6042
401 Meade Avenue
Cocoa Beach, FL 32931
321-783-7549
www.cocoabeachpier.com

N17 *Manatee Sanctuary Park*

Manatee Sanctuary Park features more than 10 acres of lush vegetation and waterfront beauty.

Lat 28.3953, Long -80.6050
701 Thurm Boulevard
Cape Canaveral, FL 32920

N18 *The Cove at Port Canaveral*

Just one of the many attractions in the Port Canaveral area, The Cove is a waterfront destination where travelers and locals can enjoy a number of restaurants, book a trip on a cruise ship or a charter boat, shop and experience live entertainment. The Cove is also home to the Port's Exploration Tower, which is seven stories of fun and spectacular views for the Byway traveler.

Lat 28.4053, Long -80.6462
SR 528 East to Port Canaveral
Cape Canaveral, FL 32920
321-514-8657

N19 *Kelly Park - East & West*

The local Kelly Park is situated on the Banana River and stretches for more than 56.3 acres. It's an internationally known windsurfing area, featuring a natural catamaran/sailboard launch, complete with the surrounding beach, showers and a boat ramp.

Lat 28.3970, Long -80.6683
2550 North Banana River Drive, Merritt Island, FL 32952
321-455-1380
www.brevardparks.com

N20 *Manatee Cove Park*

This 29.49-acre community river park is a fisherman's paradise. An access road extends from the equestrian facility at the park entrance to a small lagoon that offers refuge for manatees and a launch site for canoes and kayaks. Sea grasses in this shallow area are lush, making this one of the best places on the East Coast to see manatees.

Lat 28.4457, Long -80.7159
4905 North Tropical Trail, Merritt Island, FL 32953
321-455-1380
www.brevardparks.com



N21

Pine Island Conservation Area Management and Education Center/Sams House

The Education Center/Sams House is located within the 900-acre Pine Island Conservation Area (PICA). Enjoy hiking, biking, fishing, canoeing, and kayaking through five different habitats over five miles of trails. Wading birds, bald eagles, alligators, manatees, and bobcats are some of the wildlife at PICA. Built by John H. Sams in 1875, this home is the oldest standing home in Brevard County. Originally built in Eau Gallie, the house was taken apart, floated up the Indian River Lagoon and reassembled on this site in 1878.

Lat 28.3920, Long -80.7172
6195 North Tropical Trail, Merritt Island, FL 32953
321-449-4720
www.pica.eelbrevard.com

N22

Kennedy Space Center Visitor Complex

Known worldwide as NASA's launch headquarters, this is the only place on Earth where travelers can tour launch areas, meet an astronaut, see formerly used giant rockets, and experience spaceflight simulators. The facility is open to visitors year-round.

Lat 28.5260, Long -80.6790
SR 405, Kennedy Space Center, FL 32899
866-737-5235
www.kennedyspacecenter.com



Central Loop

C1

Turkey Creek Sanctuary

One of the gems of the city of Palm Bay Parks system offers jogging paths and a great boardwalk through the woods, with informational signs for wildlife and plants found in the park. There are manatees, alligators and Florida turtles in the creek, and you might also see an otter or a gar fish.

Lat 28.0158, Long -80.6005
1518 Port Malabar Boulevard
Palm Bay, FL 32905
321-676-6690
www.palmbayflorida.org/parks/city_parks/turkey_creek.html

C2

Castaway Point Park

Castaway is a city park offering one of the few natural beaches that visitors can enjoy along the Indian River Lagoon.

Lat 28.0310, Long -80.5816
2990 Bay Boulevard, Northeast
Palm Bay, FL 32905
321-952-3443
www.palmbayflorida.org/parks/city_parks/castaway.html

C3

The Ted Moorhead Lagoon House Visitor Center and IRL NSB Welcome Center

This is the Welcome Center for the Indian River Lagoon and the Indian River Lagoon National Scenic Byway.

Travelers can stop here to pick up information about both the lagoon and scenic byway. The Lagoon House is also the home of The Marine Resources Council, which focuses on all major issues involving the lagoon.



Lat 28.0594, Long -80.5922
3275 Dixie Highway, Northeast Palm Bay, FL 32905
321-725-7775
www.mrcirl.org

C4

Historic Downtown Melbourne

The historic downtown Melbourne area provides shopping and dining opportunities. Many events are also hosted here throughout the year – including Friday Fest and the Annual Fall Art and Crafts Festival.

Lat 28.0783, Long -80.6043
East New Haven Avenue, Melbourne, FL 32901
321-724-1741
www.downtownmelbourne.com

C5

Historic Rossetter House Museum & Gardens

This area is home to the Rossetter House and Gardens (circa 1908), the Roesch House (circa 1892) and the Houston Cemetery (circa 1865). Visitors can enjoy historical tours and garden tea parties or find a souvenir in the museum gift shop.

Lat 28.1283, Long -80.6260
1320 Highland Avenue
Melbourne, FL 32935
321-254-9855
www.rossetterhousemuseum.org



C6

Foosaner Art Museum at the Eau Gallie Art District

With five galleries housing more than 3,000 objects on display, this regional landmark also features an educational wing, gathering space and various attractions for visitors.

Lat 28.1329, Long -80.6281
1463 Highland Avenue, Melbourne, FL 32935
321-242-0737
www.brevardartmuseum.org

C7 *Pineapple Park*

This local park offers a fishing pier, picnic areas, park benches and a playground for both visitors and locals to enjoy. In 2014, the Coalition, in partnership with the Eau Gallie Arts District (EGAD) established an informational kiosk at the park.

Lat 28.1325, Long -80.6270
1521 Pineapple Avenue
Melbourne, FL 32901



C10 *Riverside Pier Park*

This park spans just less than one acre and features a pier overlooking the river, a walking path that traverses the length of the park, picnic tables and a large bench swing.

Lat 28.0895, Long -80.5761
200 North Riverside Place, Indialantic, FL 32903
321-723-2242

C11 *Melbourne Beach Pier*

One of the oldest piers along the Indian River, it is ideal for fishing, soaking in the sun or just experiencing the scenic view.

Lat 28.0684, Long -80.5647
The western end of Ocean Avenue
Melbourne Beach, FL 32951
321-724-5860



C8 *The Old Pineapple Inn*

The Old Pineapple Inn is a bed and breakfast located in the historic William H. Gleason House, which is listed on the National Register of Historic Places.

Lat 28.1353, Long -80.6285
1736 Pineapple Avenue, Melbourne, FL 32935
321-254-1347
www.oldpineappleinn.com

C9 *James H. Nance Park*

This park offers direct access to the beach, along with a boardwalk that's great for people watching. Surfers and beachgoers alike gather here to enjoy the ocean and shop.

Lat 28.0921, Long -80.5665
201 North Miramar (Corner of A1A and Wavecrest Avenue)
Indialantic, FL 32903
321-723-2242

C12 *Quan Ponce de Leon Landing Park*

This regional beach park covers over 25 acres and features two beach crossovers, a pavilion, restrooms and parking. Dedicated to Juan Ponce de Leon and his epic voyage in 1513, the park is believed to be the spot where he landed.

Lat 28.0114, Long -80.5309
4005 Highway A1A
Melbourne Beach, FL 32951
321-255-4400
www.brevardparks.com



South Loop

S1 *Grant Historical House*

This historical house is a monument to the early days of Florida and serves as a tribute to pioneers of the surrounding communities.

Lat 27.9123, Long -80.5172
5795 U.S. Highway 1
Grant, FL 32949
321-723-8543



S2 *Micco Scrub Sanctuary*

This sanctuary is a protective area of more than 1,300 acres for Brevard County's remaining scrubby flatwoods and mesic flatwoods habitat. Visitors can enjoy many hiking trails and view local wildlife.

Lat 27.8740, Long -80.6159
500 Micco Road, Micco, FL 32976
321-255-4466
www.eelbrevard.com

S3 *St. Sebastian River Preserve State Park*

This state park site consists of open, grassy forests of longleaf pine covering more than 21,900 acres – a landscape that was very common in Florida many years ago. Photographers, birdwatchers and nature enthusiasts can explore miles of trails by foot, bicycle or horseback. Canoeing, boating and fishing on the St. Sebastian River are other popular activities.

Lat 27.8261, Long -80.6038
1000 Buffer Preserve Drive, Fellsmere, FL 32948
321-953-5005
www.floridastateparks.org/stsebastianriver

S4 *Marsh Landing Restaurant at the Fellsmere Old Town District*

Located in the beautifully restored Fellsmere Estates Building, Marsh Landing offers a truly unique dining experience. Historic pictures, newspaper articles and artifacts adorn the walls, making this as much a museum as it is a restaurant.

Lat 27.7691, Long -80.6017
44 North Broadway, Fellsmere, FL 32948
772-571-8622
www.marshlandingrestaurant.com

S5 *Fellsmere Trailhead Preserve and Visitors Center*

The 80-acre Trailhead Preserve provides opportunities to enjoy native Florida, including hiking, birdwatching and camping. The preserve also has an observation tower and adventure challenge course. The miles of trails in the Sebastian River State Park are perfect for hiking and horseback riding, and also provide access to Indian River County's Rail-Trail, spanning from the Indian River Lagoon to Blue Cypress Lake. The Fellsmere Visitor Center is anticipated to complete construction and open in 2016.

Lat 27.7674, Long -80.5509
Immediately west of I-95 on CR 512
Fellsmere, FL 32948
772-571-1616
www.cityoffellsmere.org

S6 *Indian River County Public Shooting Range*

This recreational area includes pistol, rifle and shotgun ranges, a sporting clay course, an air rifle and pellet gun target facility, as well as an archery range. The range facility is staffed to ensure the public's safety.

Lat 27.8171, Long -80.4751
10455 102 Terrace, Sebastian, FL 32958
772-581-4944
www.goshootingirc.com

S7 *North County Aquatic Center & Southeast Entrance to St. Sebastian River Preserve State Park*

Open to the public year-round, this family-friendly aquatic center allows patrons to enjoy both activity and competition pools, a diving well and changing facilities.

Lat 27.8171, Long -80.4751
9450 95th Street, Sebastian, FL 32958
772-581-POOL
www.ircrec.com/NCAC



S8 *Dale Wimbrow Park*

This park is located along the Sebastian River in Roseland. It features a large playground, picnic area, event area, restrooms, boat launch, fitness trail, fishing access and barbeque grills.

Lat 27.8191, Long -80.5047
11805 Roseland Road, Roseland, FL 32957
772-589-0087



S9 *Donald MacDonald Park*

Also located in Roseland along the Sebastian River is the Donald MacDonald Park. It's open year-round and features campsites, an observation boardwalk, boat launch, restrooms/showers, fire pits and concrete picnic tables.

Lat 27.8397, Long -80.4882
12315 Roseland Road, Roseland, FL 32957
772-589-0087

S10 *Fisherman's Landing*

Funded through the Stan Mayfield Working Waterfront Grant Program, this living museum gives visitors a taste of local commercial-fishing history and fresh seafood from the Indian River Lagoon.

Lat 27.8204, Long -80.4701
1540 Indian River Drive, Sebastian, FL 32958
772-388-2727

S11 *Mel Fisher's Treasure Museum*

This museum is known throughout the area as having the most spectacular and complete collection of Spanish artifacts and treasure ever assembled.

Lat 27.8177, Long -80.4694
1322 U.S. Highway 1
Sebastian, FL 32958
772-589-9875
www.melfisher.com



S12 *Sebastian River Area Chamber of Commerce Visitor Center*

The Sebastian River Area Chamber of Commerce is a designated visitor center for the Indian River Lagoon National Scenic Byway. Travelers can stop here to pick up information about the Scenic Byway and surrounding area.

Lat 27.8171, Long -80.4686
700 Main Street, Sebastian, FL 32958
772-589-5969
www.sebastianchamber.com

S13 *Sebastian Area Historical Museum*

Dedicated to the early settlers of the Sebastian area, this museum displays artifacts and features stories of historical Florida.

Lat 27.8171, Long -80.4761
1235 Main Street, Sebastian, FL 32958
772-581-1380

www.indianriverlagoonbyway.com/point_of_interest/sebastian-area-historical-museum/

S14 *Riverview Park / Paul Kroegel Statue*



This park and veterans memorial consists of more than 18 acres and has two piers, a playground, pavilions, restrooms, a yacht club with boat ramp and a walkway located along Indian River Drive.

Lat 27.8081, Long -80.4658
600 U.S. Highway 1
Sebastian, FL 32958

http://www.indianriverlagoonbyway.com/point_of_interest/riverview-parkpaul-kroegel-statue/

S15 *Environmental Learning Center*

This non-profit center is a 64-acre sanctuary with a nature nook, a discovery station and touch tank, aquariums, a butterfly garden, hiking, canoeing and more.

Lat 27.7529, Long -80.4070
255 Live Oak Drive, Vero Beach, FL 32963
772-589-5050
www.discoverelc.org

S16 *Archie Carr National Wildlife Refuge*

This National Wildlife Refuge spans more than 20 miles from Melbourne Beach to Wabasso Beach along the east coast of Florida. The refuge was created to protect the habitats of the loggerhead sea turtle (the most significant area in the Western Hemisphere) and the green turtle (the most significant area in North America).

Lat 27.9592, Long -80.5098
2 miles North of SR 510 on A1A
Sebastian, FL 32958
772-562-3909 ext. 275
www.fws.gov/archiecar



S17 *Treasure Shores Beach Park*

Located three miles north of the Wabasso Bridge, this beach park offers ADA-compliant beach access, as well as picnic tables, a playground, restrooms/showers and walking trails.

Lat 27.8109, Long -80.4241
11300 Highway A1A
Vero Beach, FL 32963

www.indianriverlagoonbyway.com/point_of_interest/treasure-shores-beach-park/



For more information on local parks, sites of interest and other amenities please see the Indian River Lagoon National Scenic Byway website at www.IndianRiverLagoonByway.com.

S18 *Pelican Island National Wildlife Refuge*

Widely known as America's First National Wildlife Refuge, Pelican Island National Wildlife Refuge was established in 1903. It has over 5,400 acres of habitat, which is home to more than 30 species of colonial water birds during winter migration and over 130 species annually. Travelers



and visitors can use the boardwalk and observation tower for birdwatching and can also enjoy hiking trails, boating, kayaking and canoeing. Local organizations offer guided boat tours and boat rentals.

Lat 27.8025, Long -80.4196
4 miles North of CR 510 on A1A
Wabasso, FL 32963
772-562-3909 ext. 275
www.fws.gov/pelicanisland



S19 *Historic Jungle Trail*

The historic Jungle Trail, now listed on the National Register of Historic Places, was originally a sandy road built in the 1920s for the citrus growers on the barrier island (called Orchid Island).

The trail passes through hammocks of palms and other coastal wetland species, as well as gated communities, spectacular homes and the shores of Indian River Lagoon.

Lat 27.8127, Long -80.4251
Located off of CR 510 in Wabasso.
www.trailink.com/trail/historic-jungle-trail.aspx



S20 *McLarty Treasure Museum*

Designated as a National Historic Landmark, the museum is located on the site of the 1715 Spanish Plate Fleet salvaging camp, where vast quantities of silver and gold were transported to Spain.

Lat 27.8588, Long -80.4476
13180 North A1A
Vero Beach, FL 32963
772-589-2147
www.floridastateparks.org/sebastianinlet



S21 *Sebastian Inlet State Park & Fishing Museum*

This state park is known as the premier saltwater fishing spot on Florida's eastern coast and is a favorite among fishermen from all over the country who come here to catch snook, redfish, bluefish and Spanish mackerel, among others. Also a popular spot for surfing, the park



hosts several competitions per year. Visitors can also enjoy two museums at the park.

Lat 27.8632, Long -80.4499
9700 South State Road A1A
Melbourne Beach, FL 32951
321-984-4852
www.floridastateparks.org/sebastianinlet

S22 *Long Point Campground*

A conservation area and river park made up of more than 84 acres, the Long Point Campground is located on an island in the Indian River Lagoon near Sebastian Inlet. It has shoreline campsites, a boat ramp, fishing dock, swimming lake, playground and picnic area.

Lat 27.8769, Long -80.4667
700 Long Point Road, Melbourne Beach, FL 32951
321-952-4532
www.campingspacecoast.com/longpoint

S23 *Barrier Island Sanctuary Management and Education Center*

An area of more than 30 acres on the barrier island, this sanctuary provides a focal point for the Archie Carr Refuge, the nesting site of tens of thousands of sea turtles each year, and the associated barrier island by providing exhibit space, a presentation hall, and ongoing education programs that promote stewardship of the area's fragile natural resources.

Lat 27.9032, Long -80.4716
8385 South Highway A1A, Melbourne Beach, FL 32951
321-723-3556
www.barrierislandcenter.com

S24 *Honest John's Fish Camp*

This area is located on Mullet Creek, just adjacent to Floridana Beach and the Indian River Lagoon in a no-wake, slow-speed manatee zone. The camp features motorboat, kayak and canoe rentals and a boat ramp, as well as a variety of bait and tackle for purchase.

Lat 27.9341, Long -80.5038
750 Old Florida Trail, Melbourne Beach, FL 32951
321-727-2923
www.honestjohnsfishcamp.com



North Loop Extension

North Loop

Central Loop

South Loop

Canaveral National Seashore

MAX BREWER MEMORIAL PKWY.

TITUSVILLE

NASA CSWY.

John F. Kennedy Space Center

ORANGE COUNTY

OSCEOLA COUNTY

Atlantic Ocean

CAPE CANAVERAL

COCOA

BENNETT CSWY.

MERRITT ISLAND CSWY.

MERRITT ISLAND

COCOA BEACH

ROCKLEDGE

PINEDA CSWY.

SATELLITE BEACH

Central Loop

EAU GALLIE CSWY.

MELBOURNE CSWY.

MELBOURNE

INDIALANTIC

MELBOURNE BEACH

PALM BAY

INDIAN RIVER



BREVARD COUNTY

INDIAN RIVER COUNTY

GRANT

FLORIDANA BEACH

MICCO RD.

MICCO

ROSELAND

SEBASTIAN

WABASSO

WABASSO CSWY.

WABASSO BEACH

FELLSMERE

FELLSMERE RD.

A1A

VERO BEACH

We are a partnership formed to heighten awareness of our local region's resources – cultural, recreational, natural, archaeological, historical and scenic – which collectively enhance the overall traveling experience. We strive to enhance the Indian River Lagoon National Scenic Byway (IRLNSB) through resource preservation, enhancement and protection. We welcome anyone with an interest in the IRLNSB, including citizens, civic groups, businesses and governments, to become a member and participate in this voluntary community based program.

Please visit www.IndianRiverLagoonByway.com for more information on how to get involved.

The Ted Moorhead Lagoon House Visitor Center and IRLNSB Welcome Center

3275 Dixie Highway NE • Palm Bay, FL 32905
321-725-7775

Fellsmere Visitor Center
anticipated opening in 2016

**Sebastian River Area
Chamber of Commerce Visitor Center**
700 Main Street • Sebastian, FL 32958
772-589-5969

Mailing Address:
**Indian River Lagoon National
Scenic Byway Coalition, Inc.**
700 Main Street • Sebastian, FL 32958



www.IndianRiverLagoonByway.com

Find us on
Facebook

11/15

